



Sylius & WEB PERFORMANCE

WHO ARE WE ?

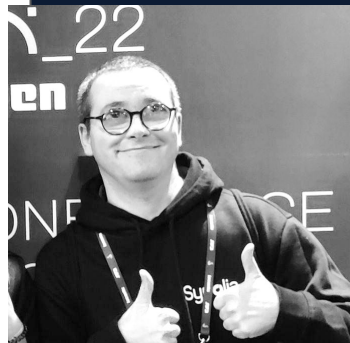


OLIVIER ALLAIN

Solution Architect at Synolia

Sylius Early adopter

Sylius' Core Team Member



HÉLÈNA GRAVELIER

Project Directress and Sylius Solution Manager at Synolia

Ecommerce and UX addict

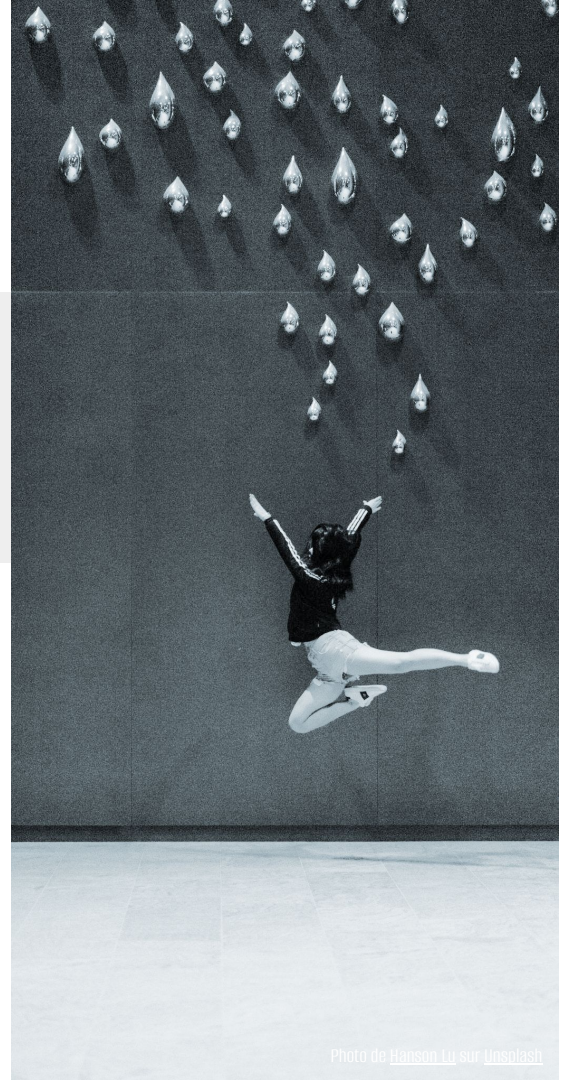


*please forgive our
wonderful french
accent !*

WHAT'S WEB PERFORMANCE ?



The **speed** in which web pages are downloaded and **displayed** on the user's browser.



WHY SHALL WE MEASURE WEB PERFORMANCE



MEASURING WEB PERFORMANCE IS IMPORTANT



HEALTH CHECK

- Identify improvements
- Measure optimizations' impact
- Monitor degradation

MEASURING WEB PERFORMANCE IS IMPORTANT



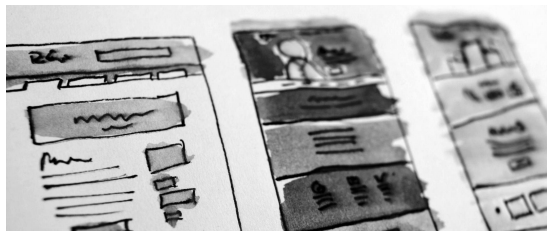
HEALTH CHECK

- Detect improvements
- Measure optimizations' impact
- Monitor degradation

BETTER USER EXPERIENCE

- Increase user satisfaction
- Bring users back
- Increase sales and sales revenue

MEASURING WEB PERFORMANCE IS IMPORTANT



HEALTH CHECK

- Detect improvements
- Measure optimizations' impact
- Monitor degradation

BETTER USER EXPERIENCE

- Increase user satisfaction
- Bring users back
- Increase sales and sales revenue

POSITIVE ECOLOGICAL IMPACT

- Less data travelling
- Energy consumption

HOW DO WE MEASURE WEB PERFORMANCE



GOOD METRICS FOR A HEALTHY SITE

CORE WEB VITALS

(Loading)

LCP

Largest Contentful Paint



(Visual Stability)

CLS

Cumulative Layout Shift



(Interactivity)

FID

First Input Delay



GOOD METRICS FOR A HEALTHY SITE

OTHER WEB VITALS

FCP

First Contentful Paint



INP

Interaction to Next Paint



TTFB

Time To First Byte



WHAT AFFECTS PROCESSING TIME



VISITOR TRAFFIC

TTFB

Time To First Byte



Users	Request/s	TTFB	Server load
1	30	90 ms	20 %
10	150	110 ms	90 %
100	130	800 ms	120 %
200	80	3000 ms	200 %

VISITOR TRAFFIC

TTFB

Time To First Byte



Users	Request/s	TTFB	Server load
1	30	90 ms	20 %
10	150	110 ms	90 %
100	130	800 ms	120 %
200	80	3000 ms	200 %

JUST NEED TO ADD SERVERS

LET'S MULTIPLY SERVERS

Servers	Users	Request/s	TTFB	Server load
1	10	150	110 ms	90 %
4	10	400	90 ms	40 %
1	100	130	800 ms	120 %
4	100	550	440 ms	120 %
1	300	80	3000 ms	200 %
4	300	550	910 ms	200 %

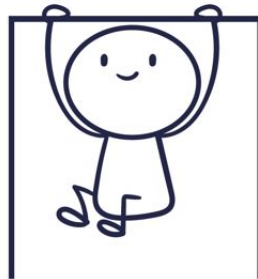
LET'S MULTIPLY SERVERS

Servers	Users	Request/s	TTFB	Server load
1	10	150	110 ms	90 %
4	10	400	90 ms	40 %
1	100	130	800 ms	120 %
4	100	550	440 ms	120 %
1	300	80	3000 ms	200 %
4	300	550	910 ms	200 %

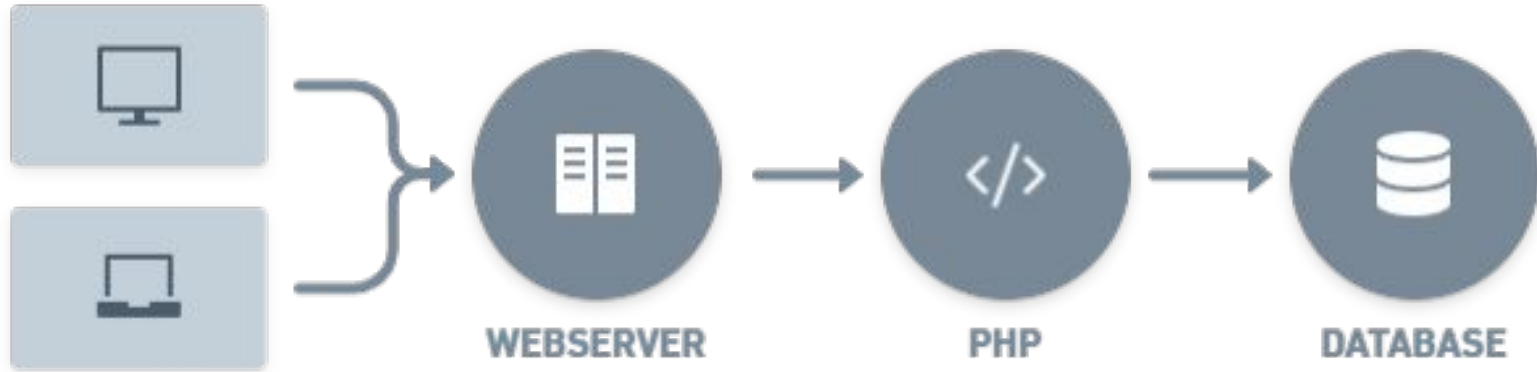
IT'S PROBABLY NOT THE BEST IDEA!

AND IT COSTS MUCH MORE !

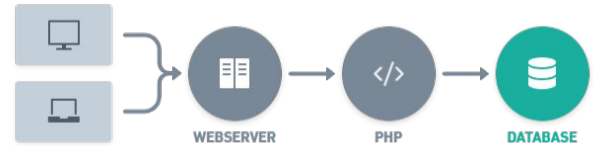
HOW CAN WE REDUCE PROCESSING TIME



REMINDER : SIMPLE REQUEST LIFECYCLE



BY OPTIMIZING DATABASE REQUEST



```
class ProductRepository extends BaseProductRepository implements ProductRepositoryInterface
{
    //...
    public function findLatestByChannel(ChannelInterface $channel, string $locale, int $count): array
    {
        return $this->createQueryBuilder('o')
            ->addSelect('translation')
            ->innerJoin('o.translations', 'translation', 'WITH', 'translation.locale = :locale')
            ->andWhere(':channel MEMBER OF o.channels')
            ->andWhere('o.enabled = :enabled')
            ->addOrderBy('o.createdAt', 'DESC')
            ->setParameter('channel', $channel)
            ->setParameter('locale', $locale)
            ->setParameter('enabled', true)
            ->setMaxResults($count)
            ->getQuery()
            ->enableResultCache(300) // <- cache for 5 min
            ->getResult()
    }
}
```

BY OPTIMIZING THE SYMFONY CACHE



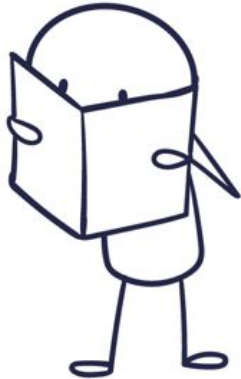
```
public function latestProduct(): Response
{
    $cacheItem = $this->cache->getItem('latestProducts');

    if ($cacheItem->isHit()) {
        return $this->render('...', ['latestProducts' => $cacheItem->get()]);
    }

    $latestProducts = $this->productRepository->findLatestByChannel($channel, $locale, self::LASTEST_PRODUCTS_SHOW);
    $cacheItem->set($latestProducts);
    $cacheItem->expiresAfter(30);
    $this->cache->save($cacheItem);

    return $this->render('...', ['latestProducts' => $latestProducts]);
}
```

**COULD WE PUT A CACHE
IN FRONT OF THE SERVER**



CACHING IN FRONT OF THE SERVER



WHAT ARE THE BENEFITS OF VARNISH



VARNISH'S BENEFITS

Varnish respond very quickly (30ms)

Most requests are handled by Varnish

Traffic peaks are painless (commercial operations or DDOS attacks)

Supports “grace mode”



WHAT ARE THE CONSTRAINTS OF VARNISH



VARNISH'S CONSTRAINTS

Special skills VCL language knowledges

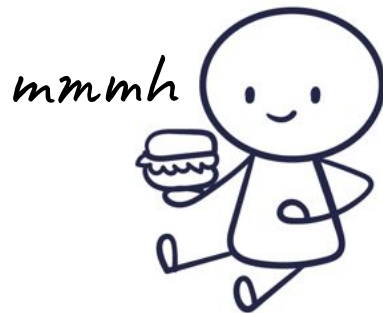
No SSL support

Complex to measure and benchmark results

Invalidating and flushing cache management



WHAT ABOUT COOKIES

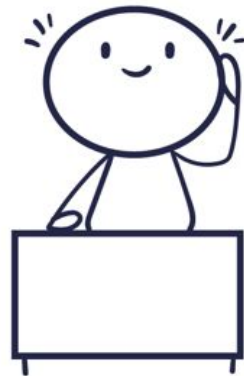


MUST REMOVE THEM

```
sub vcl_recv {  
    // Remove all cookies except the session ID.  
    if (req.http.Cookie) {  
        set req.http.Cookie = ";" + req.http.Cookie;  
        set req.http.Cookie = regsuball(req.http.Cookie, "; +", ";");  
        set req.http.Cookie = regsuball(req.http.Cookie, ";(PHPSESSID)=", "; \1=");  
        set req.http.Cookie = regsuball(req.http.Cookie, ";[^ ][^;]*", "");  
        set req.http.Cookie = regsuball(req.http.Cookie, "^[; ]+|[; ]+$", "");  
  
        if (req.http.Cookie == "") {  
            // If there are no more cookies, remove the header to get the page cached.  
            unset req.http.Cookie;  
        }  
    }  
}
```

EXCEPT PHPSESSID COOKIE

IN PRACTICE ON SYLIUS



SIMPLE WAY TO DO IT

Varnish cache key (hash) based on URL

Ready for multilingual of Sylius

Applicable to :

- Home
- Products and Products Lists
- Content
- Sitemap, robots.txt, ...



```
final class VarnishSubscriber implements EventSubscriberInterface
{
    private const CACHED_ROUTES = [
        'sylius_shop_homepage',
        '...',
    ];

    public static function getSubscribedEvents(): array
    {
        return [
            'kernel.response' => [
                ['onKernelResponse', -9999],
            ],
        ];
    }

    public function onKernelResponse(ResponseEvent $event): void
    {
        // ...
    }
}
```



```
final class VarnishSubscriber implements EventSubscriberInterface
{
    // ...

    public function onKernelResponse(ResponseEvent $event): void
    {
        if (!$event->isMainRequest()) {
            return;
        }

        $request = $event->getRequest();
        $route = $request->attributes->get('_route');
        $hasCookies = $event->getResponse()->headers->has('set-cookie');

        if ($hasCookies || !\in_array($route, self::CACHED_ROUTES, true)) {
            $event->getResponse()->setPrivate();
            $event->getResponse()->setMaxAge(0);
            $event->getResponse()->setSharedMaxAge(0);
            $event->getResponse()->headers->addCacheControlDirective('must-revalidate');
            $event->getResponse()->headers->addCacheControlDirective('no-store');

            return;
        }

        $event->getResponse()->setPublic();
        $event->getResponse()->setMaxAge(30);
        $event->getResponse()->setSharedMaxAge(30);
        $event->getResponse()->headers->removeCacheControlDirective('must-revalidate');
    }
}
```


IMPACTS FOR THE USER

Sign up to our newsletter and grab -20% off

Hello Richmond Jenkins!

[My account](#)

[Logout](#)

[Chairs](#)

[Lamps](#)

[Mugs](#)

[Plants](#)

 €119.36, 1 item

Brace yourself!
Winter is coming

[CHECK OUT THE NEW COLLECTION](#)

Latest products >

Winter sale

EDGE SIDE INCLUDES (ESI)

```
// config/packages/framework.php
use Symfony\Config\FrameworkConfig;

return static function (FrameworkConfig $framework): void {
    $framework->esi()
        ->enabled(true)
    ;
};
```

Symfony configuration

Varnish configuration

```
sub vcl_recv {
    // Add a Surrogate-Capability header to announce ESI support.
    set req.http.Surrogate-Capability = "abc=ESI/1.0";
}

sub vcl_backend_response {
    // Check for ESI acknowledgement and remove Surrogate-Control header
    if (beresp.http.Surrogate-Control ~ "ESI/1.0") {
        unset beresp.http.Surrogate-Control;
        set beresp.do_esi = true;
    }
}
```

EDGE SIDE INCLUDES (ESI)

Twig changes

```
{# Layout/Header/_cart.html.twig #}
```

```
<div class="right aligned column">
```

```
    {{ render(url('sylius_shop_partial_cart_summary', {'template': '@SyliusShop/Cart/_widget.html.twig'})) }} 
```

```
</div>
```


```
{# Replace by #}
```

```
<div class="right aligned column">
```

```
    {{ render_esi(url('sylius_shop_partial_cart_summary', {'template': '@SyliusShop/Cart/_widget.html.twig'})) }} 
```

```
</div>
```


SYLIUS' TAXONS & PRODUCTS



Winter sale

Simple lamp

~~€51.19~~ €25.60




Winter sale

StandUp Lamp

~~€10.13~~ €5.07

[Home](#) / [Home Category](#) / [Lamps](#) / Simple lamp



Simple lamp

★★★★☆ 2 Reviews [Add your review](#)

~~€51.19~~ **€25.60**

SIMPLE_LAMP


Modem. Exercitationem incidunt minus qui et dolores. Excepturi maxime eos inventore provident non. Et non expedita dolores dolorem magni corrupti.

Lamp color*

Red

Quantity*

1

 Add to cart

VARNISH USER CONTEXT HASH

User	Session ID	Role	User contexte hash
Anna		anonymous	1
Bob		authenticated	1
Peeter	a	vip user	2
John	b	vip user	2
Sofia	c	partner A	3
Jack	d	partner B	4

TIPS & TRICKS

Use AJAX instead of ESI

Beware of plugins : they can add “unwanted” cookies ...

Create a Cookie on the developer toolbar to bypass
varnish cache

Cache warm-up



VISITOR TRAFFIC

Users	Request/s	TTFB	Server load
1	30	70 ms	20 %
10	150	70 ms	30 %
100	130	70 ms	40 %
200	80	70 ms	60 %

WELL DONE !

KEY FACTS

- A high-performance website means a **successful user experience**
- A successful user experience means **satisfied, returning users and a positive impact on sales**
- There are **many tools for measuring web performance**
- Choose the **right tool for the project needs**
- Web performance can be optimised by using **caches**, but there are also other solutions, such as **CDNs**.
- **Start with improvements that have a strong impact and are quick to implement**, before tackling minor optimisations that can be more time-consuming and costly.

A nighttime photograph of a cityscape, likely Paris, featuring the Eiffel Tower in the background. The scene is reflected in a body of water in the foreground. The text 'THANK YOU' is overlaid in large, white, bold, sans-serif capital letters. The background shows various city lights, including street lamps and building lights, which are reflected in the water. The Eiffel Tower is illuminated and stands out against the dark sky. The overall mood is serene and celebratory.

THANK YOU

HAVE ANY QUESTIONS ?

LET'S STAY IN TOUCH

and have a coffee ... or a beer ?

Synolia

Olivier ALLAIN

www.linkedin.com/in/oallain/

oallain33

olivier.allain@synolia.com



Hélène GRAVELIER

www.linkedin.com/in/helenagravelier/

LenaLscn

helena.gravelier@synolia.com



Illustrations from Freepik